

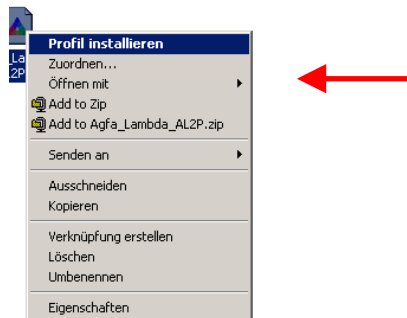
Installation and Application of Generic d-lab Profiles

1) Installation:

Please download the profile (**Gen_Prestige3_dlab1_V1.icc** for **d-lab.1** using **Type 12 / Prestige 3 paper** or **Gen_Sensatis_dlab_V1.icc** for **d-lab.2/2plus/3** using **Splendix/Sensatis paper**) to your local harddisc.

Click the profile icon of Windows Explorer with the right mouse button and the following menu will appear (pic. 1):

pic.1



Please, select „install profile“ and the ICC profile will be installed automatically in to the directory `C:\WINNT\system32\spool\drivers\color`. After that procedure the profile can be applied via Photoshop (6.0 or higher), Quark Express or other imaging software which allow the use of ICC-profiles.

2) Application:

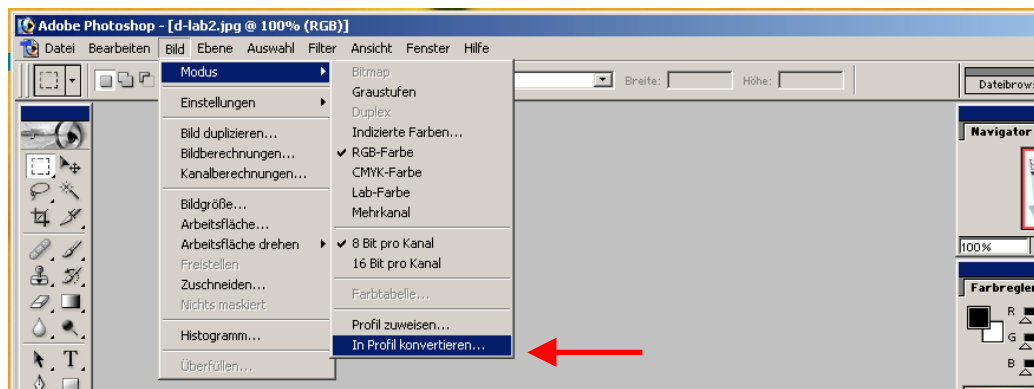
The generic ICC profile “Gen_Prestige3_dlab1_V1.icc” was generated for Agfa Prestige 3 and Type 12 paper in Agfa d-lab.1 systems (d-lab.1 allrounder, d-lab.1s basic, net-lab.1). “Gen_Sensatis_dlab_V1.icc” was created for Agfa Splendix and Sensatis paper in Agfa d-lab.2, d-lab.2plus, d-lab.3, netlab12, net-lab.2plus.

The file to be exposed on photographic paper has to be **converted** to the profile first with the help of e.g. Adobe Photoshop.

In order to do so, please click:

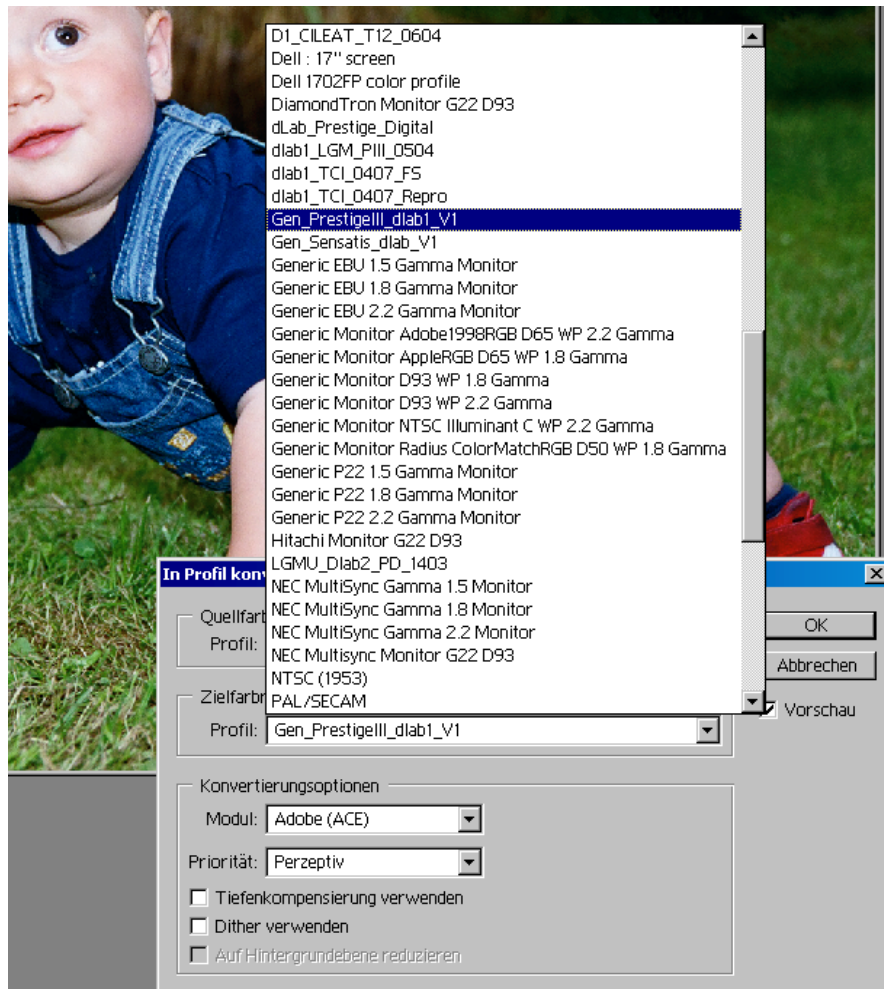
[Image] → [Modus] → [convert to profile] (pic.2).

pic.2



Please choose the required ICC profile from the list (pic.3).

pic. 3



Please make sure to choose the correct profile to guarantee a good printing result. Under "Conversion Options -> Intent", please choose "Perceptual" and deactivate "Use Black Point Compensation" and "Use Dither".

As a last step, please **save the file** and apply it to the d-lab.